

THE NORTHWEST PASSAGE: EAST TO WEST

DETAILED ITINERARY

Jan 31/25



A journey from Kangerlussuaq, Greenland to Kugluktuk, Nunavut. Travel aboard the Exploris One in comfort. Our fleet of Zodiacs will take us where the action is—the heart of history.

Our voyage begins in Greenland, home to mighty icebergs, dramatic fjords, and calving glaciers! Colourful villages offer rich culture. Crossing the Davis Strait, we'll explore the Baffin Island coast. We're on the watch for whales, birds and bears. Zodiacs stand by for excursions; visit Franklin expedition graves at Beechey Island. Follow in the wakes of Franklin, Rae, Amundsen and many more polar explorers.

Meet the Inuit who call the Arctic home. Travel with scientists, artists, musicians, local culturalists, and historians—all of whom are drawn magnetically north. Sail the great sea-route at the top of the world. The Northwest Passage calls you, too!

FACTS & HIGHLIGHTS

- 17 Days • Start in Nuuk, Greenland and finish in Kugluktuk, Nunavut • All meals on board included • Travel aboard the Exploris One • Experience the extraordinary privilege of journeying through Inuit Nunangat—the ice, water, and lands of Inuit • Cross the Arctic Circle, seek polar bears, seabirds, and other Arctic wildlife in pristine natural environments
- Cruise among icebergs at Ilulissat Icefjord, a UNESCO World Heritage Site • Spend time in one of Canada's largest National Marine Conservation Areas, Tallurutiup Imanga, searching for marine life • Retrace the historic route of European explorers, who for centuries picked their way through ice in hopes of finding a sailing route through the passage • Transit Ikirahaq (Bellot Strait), the narrow and dramatic waterway at the very northern tip of continental North America

DEPARTURE DATES & PRICES FROM (Per person)

Aug 26 - Sep 11, 2026

Premium Stateroom	-	\$23995 USD
Superior Stateroom	-	\$24695 USD
Ocean Stateroom	-	\$25395 USD
Deluxe Stateroom	-	\$26695 USD
Balcony Stateroom	-	\$28145 USD

Does not include charter flight costs - \$2695 USD.

Activity Level: 1

Comfort Level:

Seas can be rough. Zodiac landings required.

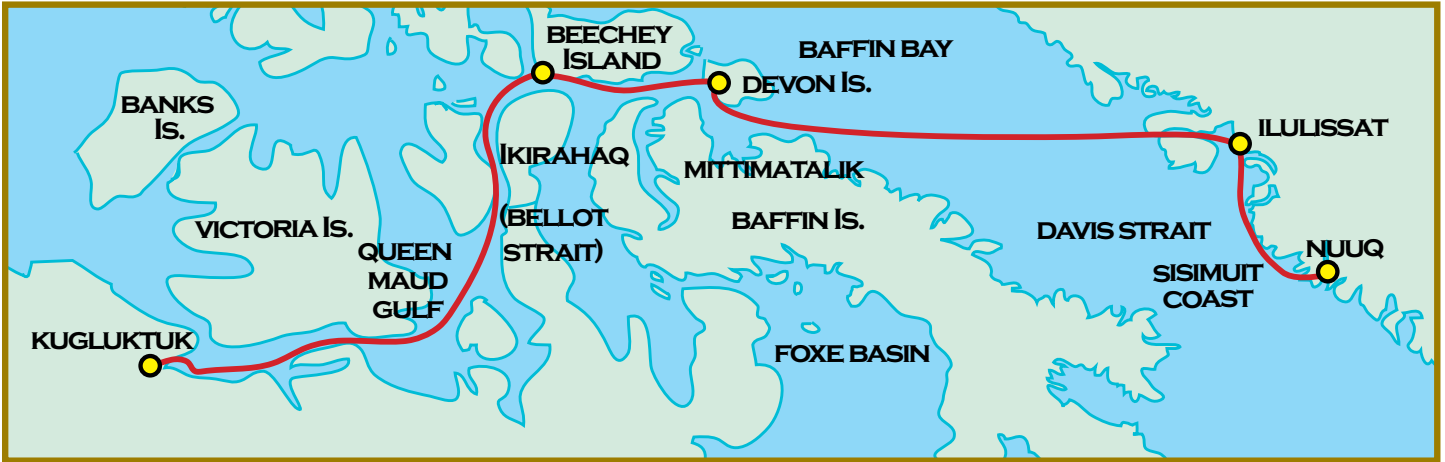
ACCOMMODATIONS

Travel aboard the Exploris One.

ELDERTREKS



SMALL GROUP
EXOTIC ADVENTURES
FOR TRAVELERS 50 PLUS



This is not an ElderTreks operated tour. As such, participants on this tour are not exclusive ElderTreks clients and it may not adhere to ElderTreks' maximum size restrictions of our tours.

DAY 1 NUUK, GREENLAND

Your journey begins in Nuuk, Greenland's vibrant capital city and home to the country's newest airport. As Greenland's cultural and economic hub, Nuuk blends modern life with rich history and stunning natural beauty. With a population of under 20,000 people, it's one of the smallest capital cities in the world, offering a unique mix of contemporary architecture and traditional Inuit culture.

DAYS 2-3 SISIMIUT COAST

Explore West Greenland's complex coastal waterways that include small communities, glaciers, islands, and fjords against a towering mountain backdrop, with plentiful opportunities for hiking and Zodiac cruising.

Learn about the Saqqaq, Dorset, Thule, and modern Inuit cultures that have called the Sisimiut region home for the past 4,500 years.

The waters are relatively warm here, due to the West Greenland Current and the subarctic location.



DAY 4 ILULISSAT

Experience the remarkable beauty of Ilulissat Icefjord, renowned for its enormous icebergs. Ilulissat means “iceberg”—an apt name for this site at the outlet of the Sermeq Kujalleq glacier. It is a UNESCO World Heritage Site and the source of many of the icebergs in the North Atlantic.

Marvel at the sheer grandeur of the towering ice formations as you take a stroll along the boardwalk—truly a sight to behold! Visit the town, with its captivating museums, charming cafes, craft shops, and bustling fishing harbour. Be sure to make your way to the Ilulissat Icefjord Centre, where you can delve into the fascinating narratives surrounding the ice and gain a deeper appreciation for this awe-inspiring natural wonder.

DAY 5 WESTERN GREENLAND

Exploring by ship and Zodiac along the west coast of Greenland, we have numerous options for expedition stops, to make the most of weather and wildlife conditions.

Whether you're setting foot on land, cruising by Zodiac, or out on the ship's deck, you'll have plenty of chances to learn alongside expert geologists, naturalists, and marine biologists. With Inuit expedition team members at your side, you'll gain an intimate perspective on the abundant flora and fauna you encounter.

Take a moment to savour the tranquility and absorb the knowledge and stories shared by Inuit cultural educators, which will deepen your connection to this breathtaking landscape.

Departing Greenland, we cross Baffin Bay toward Nunavut.

DAY 6 AT SEA - DAVIS STRAIT

As we sail toward Nunavut, our expedition team will deepen your understanding of the Arctic. This is an excellent time to enjoy workshops, watch a documentary, or get out on deck. Keep your binoculars ready for minke and humpback whales, as well as the seabirds that are sure to mark our passage.

Take the unique opportunity to learn from Inuit in their homeland, gaining a better understanding of the daily lives of the regions we visit. Enjoy cultural performances and maybe even participate in Inuit games, or sample country food.

Through shared experiences and interactions, develop a deep appreciation for the region's vibrant culture and gain a connection to the stunning landscapes we traverse.

DAY 7 HIGH ARCTIC

Enjoy the warmth of an Inuit welcome as drum dancers, throat singers, and cultural ambassadors share their stories, songs, and connections to the land.

Explore the beautiful surroundings of an Arctic hamlet, get to know local residents and learn about their ways of life, and have the opportunity to purchase carvings and handicrafts to bring back home.

DAYS 8 - 9 TALLURUTIUP IMANGA (LANCASTER SOUND) & DEVON ISLAND

We will spend ample time exploring Tallurutiup Imanga (Lancaster Sound), one of the newest National Marine Conservation Areas in Nunavut. Narwhal, beluga, and bowhead whales transit and feed in this area.

Cruise by ship and Zodiac in search of wildlife with expert biologists and ecologists. Learn more about the crucial role Inuit play in conserving the vibrant biodiversity of these waterways and the enduring connection between the ocean and Inuit.

On the northern border of Tallurutiup Imanga lies Devon Island, the largest uninhabited island on Earth at over 50,000 square kilometres. Flat-topped mountains, glacial valleys, and a substantial ice cap give Devon Island its unique character. We will hike the tundra, cruise a glacier face, and seek wildlife from the ship and onshore.

DAY 10 BEECHEY ISLAND

In 1845, Sir John Franklin set out from England with HMS Erebus and HMS Terror, attempting to sail through the Northwest Passage. His crew overwintered at Beechey Island—where three of his men died.

Numerous search parties later used Beechey as

a depot and rendezvous. Amundsen, Bernier, and Larsen visited Beechey. Thomas Morgan of the HMS Investigator was buried there in 1854 alongside Franklin's men. The graves and the ruins of Northumberland House are a haunting memorial.

DAY 11 PEEL SOUND

Peel Sound, once traversed by the Franklin expedition on its route south, presents numerous wildlife and exploratory opportunities. As we sail through this region, we'll enter prime polar bear territory where we'll be on the lookout for good spotting opportunities. The area is also home to muskoxen, belugas, and other wildlife, making every moment a potential discovery.

Depending on ice conditions, we may make expedition stops along the way among the spectacular landscapes, a perfect setting for hiking and exploring the geological diversity of the area.



DAY 12 IKIRAHQAQ (BELLOT STRAIT)

Discover the famed Ikirahaq (Bellot Strait), a narrow passage separating Somerset Island from the Boothia Peninsula. As we sail through this two-kilometre-wide waterway, get the unique opportunity to reach the northernmost part of mainland North America.

Keep watch for an array of enchanting marine mammals from beluga whales to narwhals and seals.

Delve into the region's fascinating history and learn about Joseph René Bellot, French naval officer and Arctic explorer who joined an 1850s expedition in search for Sir John Franklin, who inspired the strait's namesake.

DAYS 13-16 KUGLUKTUK, NU, CANADA

Today marks the completion of your incredible journey through the Northwest Passage—an achievement few can claim. Arriving in Kugluktuk, take pride in having traversed one of the world's most historic and storied waterways, following in the wake of legendary explorers while forging your own unforgettable path through the Arctic.

Located at the mouth of the Coppermine River, Kugluktuk is the westernmost community in Nunavut. Known for many years as Coppermine, the community reverted to its original Inuinnaqtun name—meaning “place of moving waters”—on January 1st, 1996.

Iqaluktuuttiaq (Cambridge Bay), NU, is an alternate disembarkation point, and may be used based on sea, ice, and weather conditions.

Today we will disembark and make our way to the airport to meet our charter flights to Yellowknife, NT.

DAY 17 KUGLUKTUK (COPPERMINE), NUNAVUT

Today marks the completion of your incredible journey through the Northwest Passage—an achievement few can claim. Arriving in Kugluktuk, take pride in having traversed one of the world's most historic and storied waterways, following in the wake of legendary explorers while forging your own unforgettable path through the Arctic.

Located at the mouth of the Coppermine River, Kugluktuk is the westernmost community in Nunavut. Known for many years as Coppermine, the community reverted to its original Inuinnaqtun name—meaning “place of moving waters”—on January 1st, 1996.

Iqaluktuuttiaq (Cambridge Bay), NU, is an alternate disembarkation point, and may be used based on sea, ice, and weather conditions.

Today we will disembark and make our way to the airport to meet our charter flights to Yellowknife, NT.



THE EXPLORIS ONE DETAILS:



Maximum: 144 passengers

Wake up aboard the Exploris One, where breathtaking ocean views from your cabin spark your inner poet. This intimate ship, with space for 144 adventurers is designed to take you to the planet's most remote corners in style. Blending cozy comforts with epic exploration, it's perfect for you thrill-seekers that don't want to leave your barista behind. Learn from our expert expedition team, known for their deep knowledge and quirky charm. Spot seabirds from panoramic decks, enjoy inspiring talks, hands-on workshops, live music, or simply unwind in the ship's welcoming spaces.

CABIN CATEGORIES:

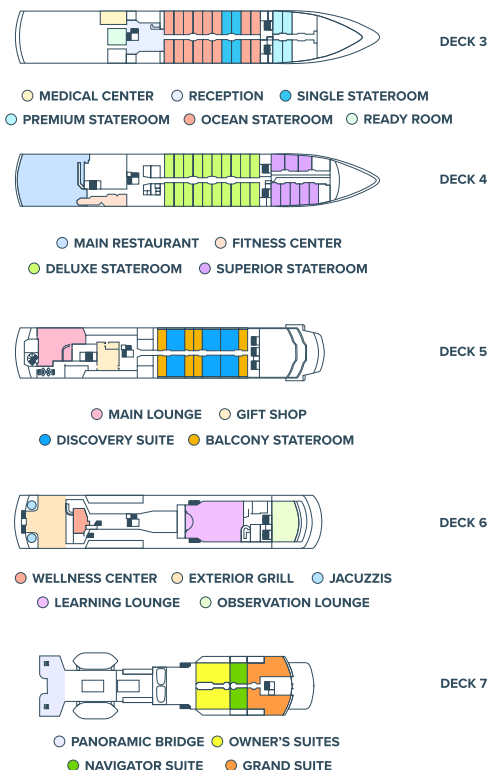
- CABIN CATEGORY 1
Premium Stateroom / Deck 3
- CABIN CATEGORY 2
Superior Stateroom / Deck 4
- CABIN CATEGORY 3
Ocean Stateroom / Deck 3
- CABIN CATEGORY 4
Deluxe Stateroom / Deck 4
- CABIN CATEGORY 5
Balcony Stateroom / Deck 5



Explorers Table Grand Restaurant aboard the Exploris One.



Main lounge aboard the Exploris One.









QUESTIONS & ANSWERS

1. HOW BIG ARE THE GROUPS?

The Exploris One is a 144 passenger vessel which was specifically built for expedition travel.

2. WHAT IS INCLUDED IN THE TOUR PRICE?

From Day 1 to disembarkation, all meals, speciality drinks (including alcoholic and non alcoholic drinks), wifi, lectures, expeditions, entertainment and services of naturalist guides are included. A complimentary expedition jacket is also included.

3. WHAT IS NOT INCLUDED IN THE TOUR PRICE?

International and charter flights, and tips. Personal expenses like telephone calls and laundry are not included and put onto your shipboard account which is payable in USD the night prior to disembarkation. Gratuities are not included. Automatic gratuity of \$15 USD per guest/per day will be added to shipboard account. This goes into a lump sum and distributes to the entire crew equally.

4. ARE THESE “EDUCATIONAL” TOURS?

Yes, in the broadest sense of the word, “educational”. We visit museums and local villages. We also have talks and discussions on many aspects of the history and culture in the areas travelled, but this is only one aspect of what we do. We believe that it is equally educational to meet new people on a non-commercial basis. Sometimes the most “educational” moments are spent having a cold drink with the locals.

5. HOW DO WE TRAVEL DURING THE TOUR?

We cruise on our vessel and often use zodiac’s for our adventure excursions.

6. WHAT ARE OUR ACCOMMODATIONS LIKE?

The ship offers exterior cabins with lower berths (one queen size bed, with the option to split into two beds.) All cabins have private washroom facilities, safe, mini bar, direct satellite telephone line, flat

screen TV, 24 hour room service and AC. Cabin sizes vary from 160 sq feet to 720 sq feet. The ship’s amenities also include a fitness center, sauna, massage room and two outdoor jacuzzies. Please call for pricing.

7. WHAT ABOUT THE WEATHER?

We travel during the northern summer season. In general, we can experience temperatures between 35-55 F (1-12 C).

8. WHEN IS PAYMENT DUE?

A non-refundable deposit of \$3000 USD is due as soon as you decide to go and will reserve your place on the tour. The balance of the land payment is due 150 days before departure. Cancellation charges are applicable and these are outlined in the “Terms & Conditions” section of our brochure.

9. IS MEDICAL INSURANCE REQUIRED?

Insurance coverage is not included in the cost of your trip. Please note that medical insurance is required for this adventure with a minimum of \$500,000 USD coverage for evacuation insurance, including air ambulance. We strongly recommend cancellation and interruption insurance as well! ElderTreks offers comprehensive travel insurance and we are happy to provide you with a quote if you call our office. If you are purchasing insurance elsewhere, please ensure you provide the details to ElderTreks as soon as possible.

10. WHAT MEALS ARE INCLUDED?

All meals are included, starting with dinner on day 1 and finishing with breakfast on departure day.

11. WHAT SHOULD I TAKE ON THE TOUR?

There is a detailed “What to Take” list in our Trip Kit, which we will send to you after you have booked the trip.

12. CAN YOU ARRANGE MY FLIGHTS?

We would be happy to take care of your air arrangements. ElderTreks offers personalized flight itineraries, not group flights. Stop over enroute, come in a few days early, or extend your stay. Call us for a customized itinerary.

13. WHAT IF I WOULD LIKE MORE INFORMATION?

If you have any further questions about the adventure, please call our office for more details. A Trip Specialist will be happy to answer your questions. A Trip Kit containing further details on the destination will be sent to you once you have booked the trip.



